



Our Lady's Grove  
Information Meeting for  
New Parents  
2022-23

Your Child, Our Child:  
The Wellbeing and Education  
of every child

*June 16 2022*

FÁILTE  
WELCOME



# Your Hosts

Principal: ***Anne Kernan***

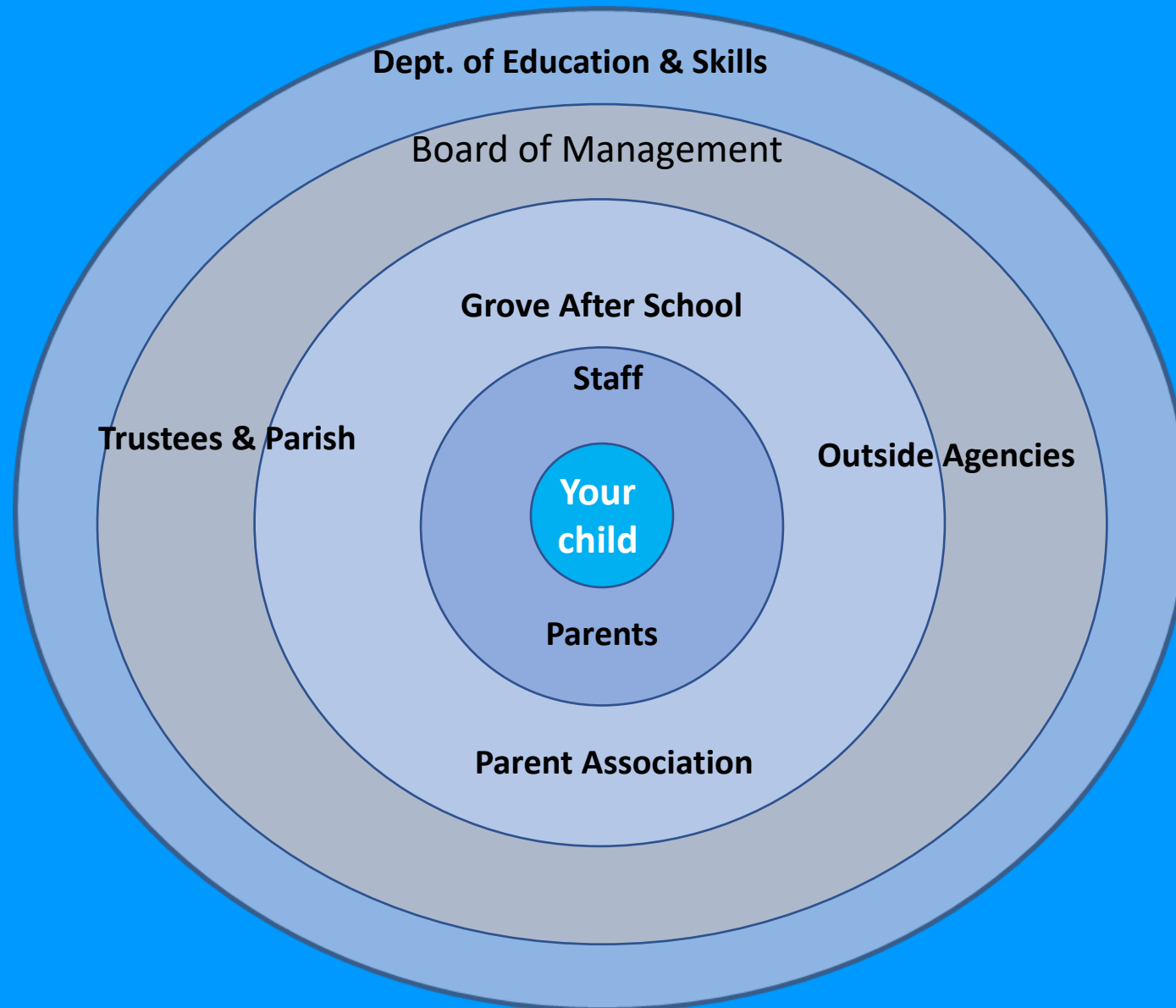
Deputy Principal & Special Education Co-Ordinator: ***JoAnna McDowell***

Present Junior Infant Class Teachers:  
***Gillian Rapple and Sarah Clerkin***

# The Agenda

- **Your Hosts**
- **Our School Ethos and Mission Statement**
- **Your Child, Our Support**
- **Our Goals**
- **The Curriculum**
- **Special Education Team and Model of Support**
- **Parent/Teacher Communication**
- **Healthy Eating Policy**
- **Allergies**
- **Head Lice**
- **Safety on School Campus**
- **Birthdays and Playdates**
- **Clothing, footwear, schoolbag, toys**
- **Outside Agencies**
- **Home and School Links**
- **Electronic Payments & Booklist**

# Your Child, Our support



# MISSION STATEMENT AND SCHOOL ETHOS

Our Lady's Grove Primary School is a Catholic community rooted in the educational philosophy of St. Claudine Thévenet, under the trusteeship of Le Chéile. Children of no Faith and other Faiths are part of the precious fabric of Our Lady's Grove

In Our Lady's Grove we strive to create a happy, safe, loving, caring and nurturing environment conducive to the attainment of the educational, creative, moral and spiritual potential of each child, enabling them to participate as responsible citizens at home, in school and within the school community at present, and ultimately within our society.

# OUR SCHOOL ETHOS

A happy, loving, caring and nurturing environment

A co-operative and collaborative environment

A culture of tolerance and appreciation for all



- Our Lady's Grove strives to be a school of educational excellence with a commitment to develop and enrich each child's personality through a child-centred education which promotes inclusion, tolerance, respect and an openness to the world around us.
- The children experience the love of living life together within our school community
- The children are nurtured so that they develop self-esteem and confidence to reach their full potential
- Our school seeks to promote healthy interpersonal relationships throughout the community with an appreciation and respect of others who are different to ourselves
- The well-being of every child is our priority. Children are supported to face the future with hope and confidence. They are nurtured in a spirit of mutual respect and responsibility for themselves, for others and for the environment
- Close contact between home and school is maintained. Parents/Guardians and school staff support one another and collaborate with each other in leading and supporting the children to the fullness of their potential at the different stages of their primary education
- Teaching and learning is characterised by love, patience and understanding, encapsulating the overall development of the children, their individuality and their life circumstances
- In fostering an openness to our world, our teaching and learning encourages the children to build a more sustainable, just and tolerant society



# Religious Instruction and Preparation for sacraments of Communion and Confirmation

- Our Lady's Grove is a Catholic Primary School where the religious instruction and preparation for the sacraments of First Confession, First Holy Communion and Confirmation, in accordance with the doctrine and the tradition of the Catholic Church is part of the education given to the Catholic children attending our school.
- Children of no Faith and other Faiths are accommodated during these religious instructional times.
- It is very important that you share with us your wishes in relation to RE and preparation for sacraments.

# OUR GOAL



Ensure excellent learning outcomes for every child



Foster a culture of respect, tolerance and appreciation of others



Promote wellbeing for all



Maintain close links between home and school

# The Curriculum

## Develop Gross Motor Skills

- Play ball games and skipping
- Practise zipping/hanging up a coat
- Practise using the bathroom/washing hands changing out of wet clothes/cleaning up

# The Curriculum

## Develop Fine Motor Skills

- Playdoh / Marla / Sand / Cutting with scissors
- Threading beads



# Aistear Role Play





# The Curriculum

## Oral Language

- Listen to how your child uses language
- Encourage full sentences
- Expand your child's vocabulary
- Engaging in daily conversation with your child
- Recite nursery rhyme

# The Curriculum

## Develop Pre-Reading Skills

- Read to your child every day
- Talk about the story and the pictures
- Ask your child to retell the story
- English as an Additional Language (EAL)



# The Curriculum

## Social, Personal and Health Education SPHE

- Stay Safe is taught as part of the SPHE Curriculum in all Primary schools
- Parents will be informed when our school begins to teach 'Stay Safe' in Term 1
- Welcome to Well-Being

# Parent / Teacher Communication

- Children will visit their new classroom at the end of June
- If your child is absent please notify us through Aladdin
- To arrange a phone call with Class Teacher send an email to [admin@olgps.ie](mailto:admin@olgps.ie) *Class Teacher and Room number in the subject box*
- Formal Parent/Teacher meetings take place during the last week of November

# Playdates

## Going on a playdate

- Send a written consent note into Class Teacher on the previous day or on the day of the playdate
- Children will not be allowed go with another adult without parental consent
- No last minute/unplanned playdates. Do not send an email to office
- In an Emergency situation always call the Office

# Head Lice

## ACT TOGETHER

- Long hair must be tied back in school
- Check hair at least three times a week and on the weekend
- If you find eggs/headlice, please inform the school immediately
- The 'Headlice' letter will be sent to parents in that class, it must be acted upon by all families that night

# Healthy Eating Policy

- Full **HE** policy is on our school website
- Lunch ideas include peeled segmented oranges, sliced apples, small sandwiches, banana, carrot sticks, cheese and raisins. **NO NUTS**
- Children do not swap lunches and bring home leftovers / packaging
- No Treats in school. No treats in schoolbag.

# Drinks

- Only drink allowed is water
- Children bring water in a sturdy bottle that can open easily and does not leak in schoolbag.

# Allergies

**NOT ALLOWED**

- Nuts of any kind
- Nut butter
- Nutella
- Pesto

# Safety on School Campus

- Scooting
- Cycling
- Dismount from bike / scooter when you enter the school grounds
- Playing on the yard before school or directly after school
- Climbing the railings
- Bringing dogs to school
- Parking illegally
- PARKING is permitted in 'Set-Down' parking zone only
- Apcoa will be in operation from September



# Birthdays

- Birthday invites are NOT distributed in school
- Parents may send invites via the Class WhatsApp Group (set up in September through the PA)
- Children do not bring in birthday treats for the class

# Clothing, Footwear, Schoolbags and Toys

- School tracksuit may be worn, otherwise comfortable clothes that are easy for child to open/close
- Comfortable footwear: Velcro fastenings. No sandals or Crocs
- Schoolbags should only contain lunch box, drink and change of clothes, no stationery necessary
- Do not send toys to school
- Schoolbag should be big enough to fit homework folder

## Dear Parent/Guardian,

We know that your child is starting school in September. To celebrate this, and to help them navigate this new experience, the Minister for Children has asked us to put together a gift of a bag of books just for them.

The stories in the books are about starting school, being happy in yourself, and making friends, and they're waiting for them in a very special place: your local library.

A library card and a special Little Library card wallet is also included with every bag, and we hope that your little one will make use of it. To help them join the library, parents will be asked to sign a consent form and to show valid ID.

Library membership is free for everyone. You may wish to renew a library card for yourself or other children in your family, or join for the first time. Your ID will also be necessary in this case.

We hope that this small gift will lead your child to a lifelong love of books and reading, a love you will get to share with them.

We look forward to meeting you, and we hope you all enjoy the books,

*Your local library*



## When your Child is Sick

- If your child is feeling unwell the night before or in the morning, it's recommended to keep him/her at home
- If we observe that your child is unwell, we will contact you and you must be available to collect your child
- **Allianz 24/7 Pupil Accident Insurance** is recommended. This product will be available on EPP

# Attendance and Punctuality

- Strong tradition of excellent attendance and punctuality achieved through partnership with parents
- We are bound by law to report high levels of absenteeism (20 days) to the National Welfare Board.
- It is important to provide reason for absences through Aladdin
- Doors open at 8.50, children go straight to classroom
- Children arriving after 9.10 will be recorded as late. If a child has a medical, dental or unavoidable morning appointment, a note should be sent through Aladdin in advance



# Outside Agencies

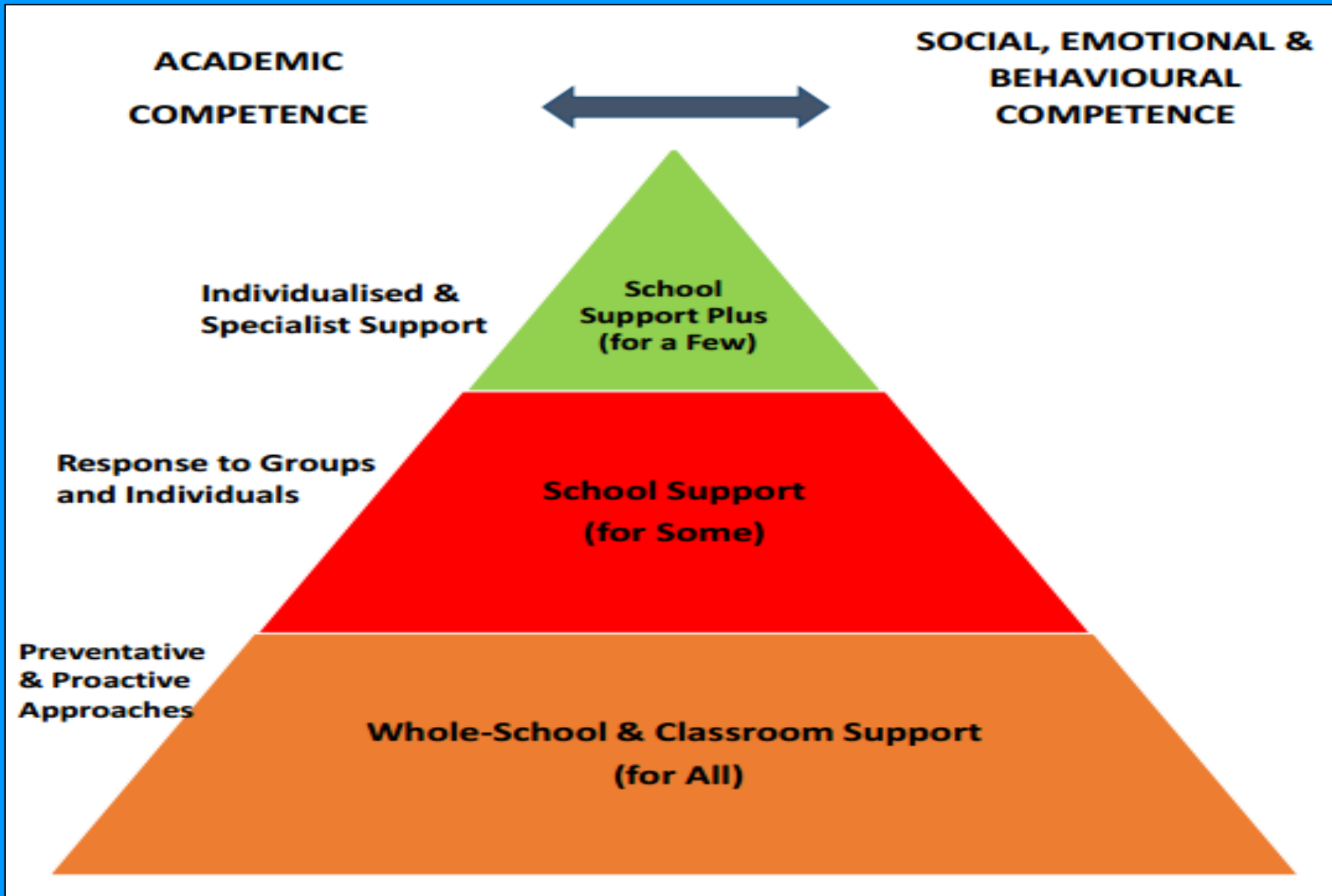
HSE

- Immunisation
- Dental (off-site)
- Hearing and Sight

Parental Consent is sought in advance

# Special Education Team (SET)

- Developing the whole child in a happy and safe school environment
- Trust between School and Parents
- School and Parents work together
- The team: 8 SET Teachers and 8 Special Needs Assistants (SNAs)
- Support for all children





# Special Education Team (SET)

- Early Intervention – Literacy, Numeracy, Social Skills, Emotional Development
- Home and School Partnership
- Role of Communication

# Grove After School



**School Age Childcare and Pre-School Services**

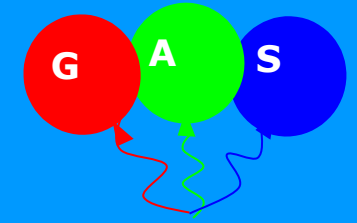
**The Grove After School Care  
(Management Co) Ltd**

The Old Convent, Our Lady's Grove, Goatstown Road,  
Goatstown, Dublin 14

Tel: 2157710/083 377 7378; Email:  
[groveafterschool1@gmail.com](mailto:groveafterschool1@gmail.com)

Website: [www.groveafterschool.ie](http://www.groveafterschool.ie)

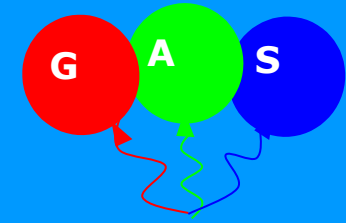
# Grove After School



## About Us:

The Grove After School has been in operation since 2002. It is an on-site childcare facility located on the grounds of Our Lady's Grove Primary School. Established as a not-for-profit company, with Charity status, and managed by a voluntary Board of Directors, together with a team of paid employees who run the day to day operations, the service consists of both an After School & Pre School. In both the Pre & After School service we provide a safe and homely setting where your child can make new friends or meet up with their school friends in a warm, welcoming environment. Homework is supervised. Our facilities include four large rooms – dining area, homework room, playroom & two pre school rooms. We also have a large outdoor space. Our staff are experienced, caring & friendly. All staff have First Aid & Child Safeguarding Training. We employ two members of our staff to help out in the Junior Infant Classrooms.

# Grove After School



## The service includes:

**Hours of Opening:** 8am-8.45 & 1.35-6pm (during school term)

Children are brought & collected from Primary School by our Staff.

## **Open outside of school term weeks 8am-6pm:**

Halloween, February Mid Term, Easter & Month of July.

Activity Camps. Closed for 2 weeks at Christmas & 1<sup>st</sup> three weeks in August for staff holidays.

## **Grove Pre School:**

**Hours of Opening:** 9am-12pm Extra Hours Available: 8-9am & 12-6pm (limited availability)

GAS is registered with the government Early Childhood Care & Education Scheme (ECCE) since 2010. We have 2 pre school classrooms and provide care before and after the classroom hours if required. A hot meal & snacks are available to the pre school children who stay on in the afternoons. Our pre school staff are fully qualified and provide a happy & safe environment for children's learning & development in their early years.

**We would be delighted to meet or talk to you with any questions you may have. Please contact the office by phone or email and visit our website [www.groveafterschool.ie](http://www.groveafterschool.ie)**

# Home and School Links

[www.ourladysgrove.ie](http://www.ourladysgrove.ie)

- Junior Infant Folder
- Aladdin Connect: Absences/Notices/Permissions/Payments
- School Calendar
- School Policies
- Ongoing Events
- Newsletters
- Upcoming Events

# Electronic Payment & Booklist

- **Aladdin payments:** OLG is a cashless School
- The school uses the Aladdin system for all payments
- New Junior Infant Parents will be added to the system during the FIRST week of July
- Junior Infant books and stationery are ordered by the school
- Class Fees must be paid by 30 September

# PAYMENTS TO OUR LADY'S GROVE

**Voluntary Contributions:** Once a year we invite parents to offer a Voluntary Contribution towards the maintenance of the school. Ideally, parents mark a date in the Academic Year and this can roll over every year. A Voluntary Contribution Request, Standing Order Forms & CHY Forms are sent to each family. The preferred method of payment, of (say) €125 per child, is EPP. If you wish to make your contribution by cheque or Standing Order, please return it with the remittance slip to the Office, in an envelope marked VC. *As a Registered Charity OLG can make a Tax Reclaim on donations over €250 (per family).* A contribution of €250 allows a tax refund of €112.32. This increases your contribution by approx. 45%. Your **€250** contribution is in effect worth **€362.32** to the school. This applies to both PAYE and self-employed tax-payers under the regulations. Please complete and return the CHY Form so that we can claim the benefit, all at no extra cost to you. **Voluntary Contributions operate on a calendar year (Jan- Dec) because tax relief is only claimable on this basis.**







# **OLG Parent Association**





## Our Purpose:

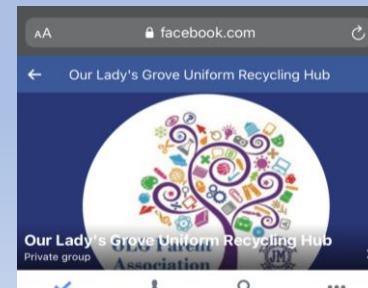
- The Parent Association work in partnership with the Principal, staff and Board of Management to build an effective partnership between home and school.
- The Parent Association support and empower parents/guardians to be active in the best interests of their children's educational lives.
- The Parents Association represent the views of parents and promotes contact and communication between the school, parents, pupils and community.

## Who we are:

- Volunteer group of approx. 20 parents/guardians of children attending Our Lady's Grove Primary School.
- One representative from each class across the school.
- The PA meet on a monthly basis.
- A sub-group meet with Ms Kernan and the BOM.
- Three year term when you join the association.
- Great way to meet other parents in the school, become more involved in what is going on in the school and bring new ideas.
- Always looking for new members to join or anyone to volunteer when and where possible!

## Get Involved!!!!

- Join our PA  
Email: [OLGPAmain@gmail.com](mailto:OLGPAmain@gmail.com)
- Sports volunteers or Coaches  
Email: [olgpasport@gmail.com](mailto:olgpasport@gmail.com)
- Make sure to join your class **WhatsApp Group** in September
- Check out our **Facebook page** for uniforms  
**Our Lady's Grove Uniform Recycling Hub**



# NEW SCHOOL YEAR WEDNESDAY AUGUST 31

- **Wednesday 31 August:** Arrive in the hall at 10.00am.  
Pick up 12 Midday
- Parents enjoy tea and coffee after children leave hall with their teacher
- **Thursday 1 September:** Pick up 12 Midday for the following 8 days until Friday 8 September
- **Monday 11 September:** 8.50am – 1.30pm



The Ursula Library  
Officially opened  
in February  
2006



INGUSH